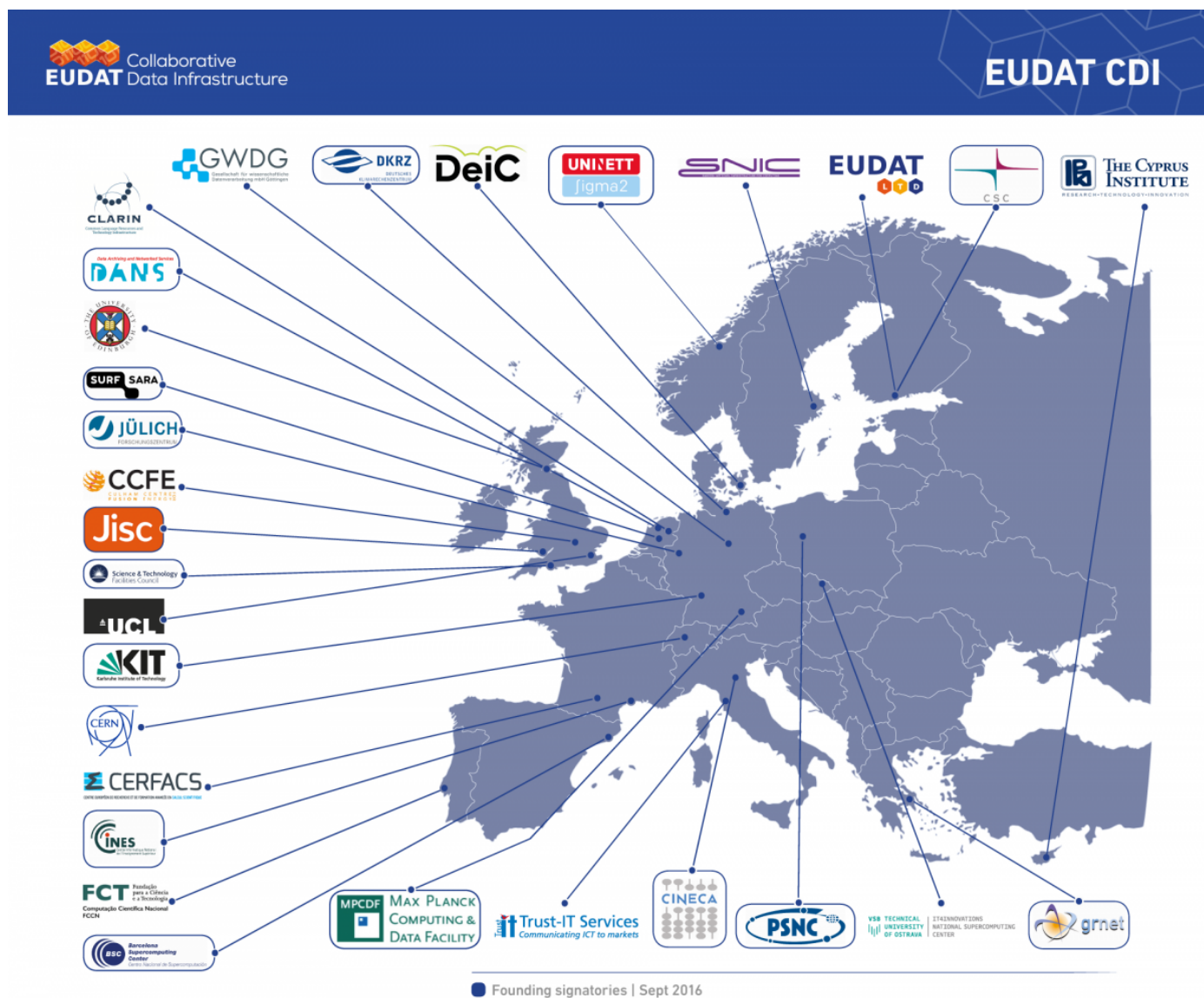


CDI Members

The EUDAT Collaborative Data Infrastructure Agreement has been signed by **over 20 of the most renowned European data centres and research organisations.**

These organisations stand together behind a long term sustainability plan and **commit to develop, maintain and deploy pan-European research data services and to promote harmonization of research data management practices across centres.**



The current EUDAT CDI members are:

1. [Barcelona Supercomputing Center - Centro Nacional De Supercomputacion \(BSC\)](#) - ES;
2. [Culham Centre for Fusion Energy \(CCFE\)](#) - UK;

EUDAT receives funding from the European Union's Horizon 2020 research and innovation programme under grant agreement No. 654065.

3. [CERFACS](#) - FR;
4. [European Organization For Nuclear Research \(CERN\)](#) - INT.;
5. [Consorzio Interuniversitario Cineca \(CINECA\)](#) - IT;
6. [Cines - National Computing Center for Higher Education \(CINES\)](#) - FR;
7. [CLARIN ERIC](#) - NL;
8. [CSC-Tieteen Tietotekniikan Keskus Oy \(CSC\)](#) - FI;
9. [Koninklijke Nederlandse Akademie Van Wetenschappen - Knav \(DANS\)](#) - NL;
10. [Danish e-Infrastructure Cooperation \(DeiC\)](#) - DK;
11. [German Climate Computing Centre \(DKRZ\)](#) - DE;
12. [University of Edinburgh \(EPCC\)](#) - UK;
13. [EUDAT Ltd. \(EUDAT\)](#) - FI;
14. [Foundation for Science and Technology FCT \(FCCN\)](#) - PT;
15. [Greek Research and Technology Network S.A. \(GRNET\)](#) - GR;
16. [Georg-August-Universität Göttingen \(GWDG\)](#) - DE;
17. [Institute of Bioorganic Chemistry Polish Academy of Sciences \(IBCH PAS\)](#) - PL;
18. [IT4Innovations](#) - CZ
19. [JISC LBG \(JISC\)](#) - UK;
20. [Jülich Research Centre \(JUELICH\)](#) - DE;
21. [Karlsruhe Institute of Technology \(KIT\)](#) - DE;
22. [Max Planck Computing and Data Facility \(MPCDF\)](#) - DE;
23. [Science and Technology Facilities Council \(STFC\)](#) - UK;
24. [SURFsara Bv \(SURFsara\)](#) - NL;
25. [Swedish National Infrastructure for Computing \(SNIC\)](#) - SE;
26. [Uninett Sigma 2 As \(SIGMA\)](#) - NO;
27. [Trust-IT Srl \(TRUST-IT\)](#) - IT;
28. [University College of London \(UCL\)](#) - UK;
29. [The Cyprus Institute](#) - CY.

[Read more](#)